

HYUNDAI
CONSTRUCTION EQUIPMENT

R140LS **SMART**

OPERATING WEIGHT: 13790 kgs

GROSS POWER : 105 HP @ 2200 rpm

BUCKET CAPACITY: 0.65m³



MOVING YOU FURTHER

*Design, Address and Name is only for information

DESIGNED FOR SMART WORK



Best-in Class Performance

- Advanced CAPO system
- Hydraulic flow summation
- Regeneration system
- Excellent digging forces

Increased Machine Durability

- Strengthened undercarriage
- Proven upper structure
- Durable components
- Reinforced front attachment

Operator Comfort

- Spacious cabin
- Fully adjustable seat
- Enhanced visibility
- User friendly functionality

Simplified Maintenance

- Easy serviceability
- Extended maintenance
- Large capacity fluid tank
- Low life cycle cost

Improved Fuel Efficiency

- Electro hydraulic control system
- One touch deceleration
- Auto deceleration system
- Efficient breaker mode

Parts & Support

- Hyundai genuine parts
- Max parts availability
- On-site product support
- Hi-Mate (RMS - Optional)

Performance

CHOICE OF OPERATING MODE

Working Mode	P Mode	S Mode	E Mode	Breaker Mode
Advantage	<ul style="list-style-type: none"> • Uses 100% engine power for mass production 	<ul style="list-style-type: none"> • Uses 85% engine power for all work 	<ul style="list-style-type: none"> • Uses 70% of engine power for reduced fuel consumption 	<ul style="list-style-type: none"> • Sets pump flow to optimal level and boosts efficiency

Fuel Efficiency



IMPROVED FUEL EFFICIENCY

New MCV, improved MCU with auto deceleration function, Advanced CAPO system, Power & working mode options results in excellent fuel efficiency.



PUMP FLOW CONTROL SYSTEM

Reduced pump flow during machine idle condition to minimize power loss.

Reliability



STRONG & STABLE LOWER FRAME

Use of specialized advance steel plates & reinforced design for higher strength & durability.



RUGGED UNDERCARRIAGE

X frame provides excellent resistance to torsional bending to enhance structure life.



REINFORCED IDLER GUIDE AREA



RELIABLE COMPONENTS

Swing system and travel system exclusively designed by Hyundai ensuring reliable performance.



HD FRONT STRUCTURE

- Thicker plates
- Casted component
- Internal baffle plate
- Added wear plates on arm
- Reinforced bucket

Serviceability

LEADING SERVICE INTERVAL

More efficient cooling system which extend service intervals, minimize operating cost and reduce machine down time.

CHANGE INTERVAL	Hydraulic oil	Hydraulic filter	Engine oil	Engine Filter
	2000 hrs	1000 hrs	500 hrs	500 hrs

Parts & Support

BENEFITS OF USING GENUINE HYUNDAI PARTS AND LUBRICANTS

- Genuine Hyundai Parts meet strict specifications and standards in Chemistry, Microstructure and Tensile Strength.
- Benefit from the continuous improvements & advancements made by Hyundai's technical team
- Improved performance of hydraulics and engine components
- Enjoy greater productivity with higher uptime
- Higher resale values
- Reduced oil consumption and unexpected breakdowns
- Enhanced component life





Specifications

Specifications

Engine

Maker/Model	HYUNDAI HM4.2		
Rated flywheel horse power	ISO3046	(Gross)	105HP@ 2200rpm
Max Torque	37.5@ 1500rpm		

Hydraulic System

Main pump	
Type	Two variable displacement piston pumps
Max. flow	2x130 lpm
Sub-pump for pilot circuit	Gear pump
Cross-sensing & fuel saving pump system	

Hydraulic motors

Travel	Two speed axial piston motor with brake valve and parking brake
Swing	Axial piston motor with automatic brake

Relief valve settings

Implement Circuit	350kgf/cm ²
Travel	350kgf/cm ²
Power Boost	380kgf/cm ²
Swing Circuit	285kgf/cm ²
Pilot Circuit	40kgf/cm ²
Service valve	Installed

Coolant & Lubricant Capacity

REFILLING	LITER
Fuel tank	270
Engine coolant	15.5
Engine oil	11.5
Swing device	2.5
Final drive (each)	3
Hydraulic system / Hydraulic tank	210 / 124

Drives & Brakes

Drive method	Fully hydrostatic type
Drive motor	Axial piston motor in-shoe design
Reduction system	Planetary reduction gear
Traction Force	13256.3kgf (130KN)
Max travel speed (high/low)	5.5kmph/3.2kmph
Gradeability	35 Degree (70%)
Parking brake	Multi wet disc

Undercarriage

X-Leg type centre frame is integrally welded with reinforced box section track frames. The under carriage includes lubricated rollers, idlers, track adjusters with shock absorbing spring and sprockets and trackchain with triple grouse shoes.

Centre frame	X-leg type
Track frame	Pentagonal box type
No. of shoes on each side	46
No. of carrier rollers each side	1
No. of track rollers, each side	7
No. of rail guard each side	1

Swing System

Swing motor	Axial piston motor
Swing reduction	Planetary gear reduction
Swing bearing lubrication	Grease bathed
Swing brake	Multi wet disc
Swing speed	12.0 rpm

Operating Weight

Shoe Width mm (in)	Operating weight kg (lb)	Ground pressure kgf/cm ² (psi)
500 mm (20")	13,790 (30,402)	0.35 (4.98)

Dimensions

(mm)

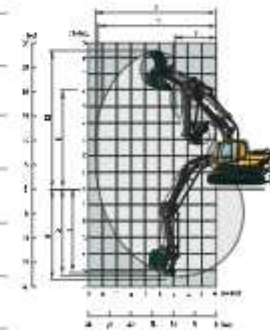


A	Overall length	7850
B	Overall width, with 500 mm track shoe	2400
C	Overall height	2760
D	Super structure width	2600
E	Overall height of cab	2860
F	Ground clearance of counter weight	940
G	Engine cover height	2210
H	Minimum ground clearance	440
I	Rear-end distance	2330
r	Rear-end swing radius	2330
l	Distance between tumbler	3000
K	Undercarriage length	3750
L	Undercarriage width	2400
M	Track gauge	1900
N	Track shoe width, standard	500

Working Ranges (mm)

Boom length (std.)	4600	Arm length (std.)	2100	2500
--------------------	------	-------------------	------	------

A	Maximum Digging Reach	7920	8330
A'	Digging Reach on Ground	7770	8180
B	Max Digging Depth	5150	5550
B'	Max- Digging Depth (B' level)	4900	5340
C	Vertical Digging Depth	4900	5330
D	Maximum Digging Height	8100	8300
E	Maximum Dumping Height	5750	6060
F	Minimum Swing Radius	2670	2650
	Arm Crowd Force	7900 (8580)*	6700 (7270)*
	Bucket Digging Force	10400 (11290)*	kgf *Power Boost



CONSTRUCTION SOLUTIONS PVT. LTD.
Thapathali, Kathmandu, Nepal | Tel: +977-1-4100543/44/45
Marayan: 9851095936 | Krishna: 9851111096
Rajendra: 9801143168 | Sunit: 9801142975 Fax: +977-1-4100542
Email: sales@cspl.com.np, info@cspl.com.np
Website: www.hyundaice-nepal.com

Service Center:
Khumaltar, Lalitpur
Tel: +977-1-5548970/71
Mob: 9851111094
Spare Parts: 9851111093

PLEASE CONTACT