

HX380L

MAX POWER : 265HP(198KW) @ 2000 RPM

TRAVEL SPEED : 5.0KM/HR/3.1 KM/HR

OPERATING WEIGHT : 37200 KG

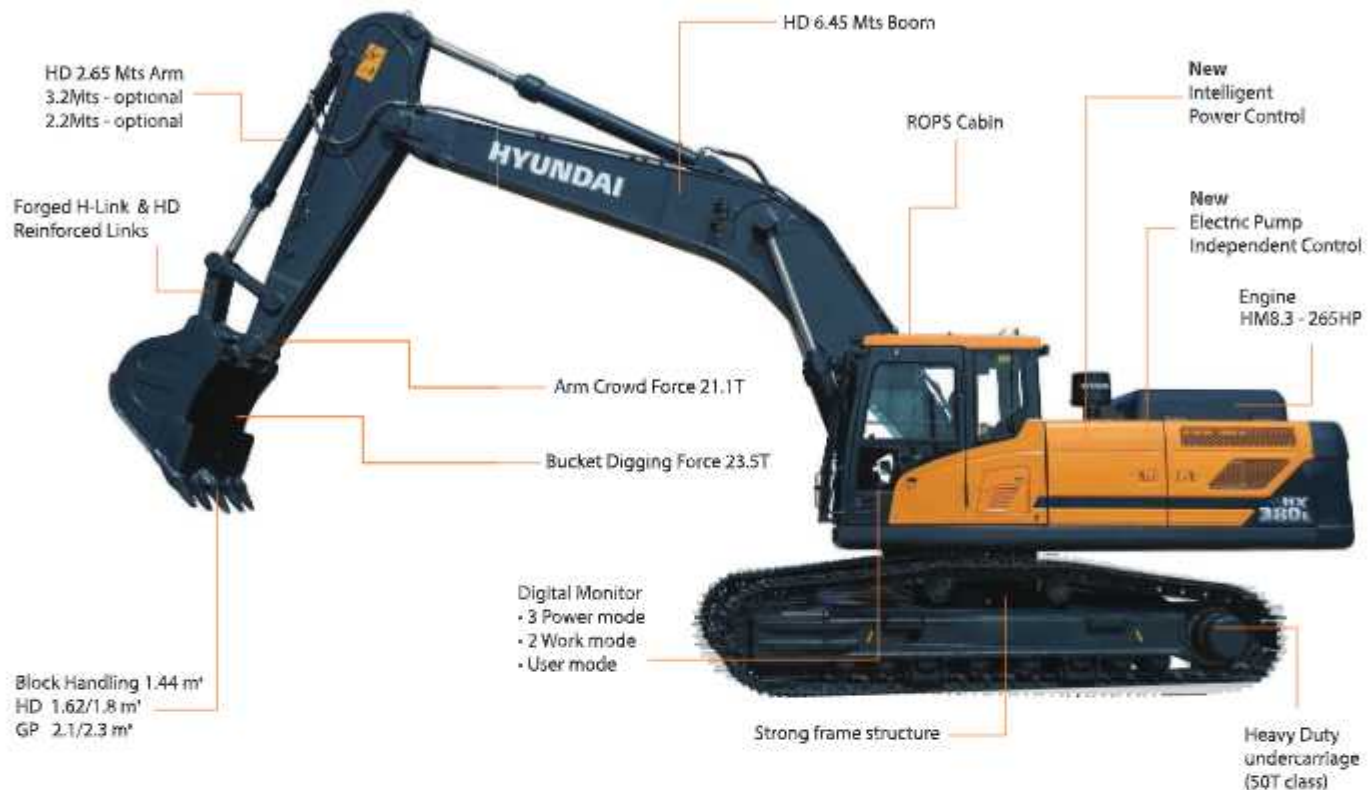


MOVING YOU FURTHER

*Photo may include optional equipment.

RULE THE GROUND

The HX Series exceeds customer's expectation! Become a true leader on the ground with HCE's HX Series.



WORK MAX, WORTH MAX

- New Variable Power Control
- IPC (Intelligent Power Control)
- Cycle Time Improvement
- Enlarged Air Inlet with Grill Cover
- New Cooling System with Increased Air Flow
- Fuel Rate Information (Option)
- Attachment Flow Control (Option)
- ECO Gauge

INFOTAINMENT FRONTIER

- New Front Side Air Conditioning Systems
- Intelligent and Wide Cluster
- New Audio System

MORE RELIABLE, MORE SUSTAINABLE

- Durable Cooling Module
- Reinforced Pin, Bush, and Polymer Shim
- Reinforced Durability of Upper and Lower Structure and Attachments
- Hi-grade (High-pressure) Hoses
- Wear Resistant Cover Plate

MODERN COMFORT, SIMPLE AND SAFE SOLUTION

- Rear view Camera System (Option)
- Hi-mate (Remote Management System)
- Cab Suspension Mount

APPLICATIONS



Marble Quarry



Iron Ore Mining



Granite Quarry



Stone Quarry

WORK MAX, WORTH MAX



IPC (Intelligent Power Control)

The IPC controls power depending on work environments. Its mode can be selected and released on the monitor. On the excavation mode, pump flow can be easily controlled by a lever, reducing fuel consumption.



New Cooling System with Increased Air Flow

With the cooling module improving air inflow, the HX Series provides excellent cooling performance by increasing heat dissipation.



Cycle Time Improvement

The HX Series provides higher productivity on the site by faster operation: it loads trucks up to 10% faster and levels up to 16% faster than the 9S Series.

MORE RELIABLE, MORE SUSTAINABLE



Reinforced Pin, Bush, and Polymer Shim

The HX Series improves lubricity of connecting parts between the equipment and attachments. Gaps with attachments are minimized by wear-resistant long-life pins, bushes, and polymer shims, supporting the highest performance with invariable durability.

Wear Resistant Cover Plate

A wear-resistant cover plate is installed at the end of the arm to minimize abrasion on the connector between the arm and the bucket. Vibration reduction of buckets enables more stable operation even in high-load work.

Hi-grade (High-pressure) Hoses

The HX Series uses high-pressure hoses with improved heat and pressure resistance, greatly increasing the durability of the equipment.



Reinforced Durability of Upper and Lower Structure and Attachments

The upper and lower structure and attachments of the HX Series have higher durability than demanded on the site, as proven through numerous tests including load tests and virtual simulation. The wear resistance of the bucket has been improved by use of new material.



Durable Cooling Module

The HX Series has a durable cooling module that passed stringent tests, demonstrating the highest productivity in tough working environments.

Parts & Support

BENEFITS OF USING GENUINE HYUNDAI PARTS AND LUBRICANTS

- Genuine Hyundai Parts meet strict specifications and standards in Chemistry, Microstructure and Tensile Strength.
- Benefit from the continuous improvements & advancements made by Hyundai's technical team
- Improved performance of hydraulics and engine components
- Enjoy greater productivity with higher uptime
- Higher resale values
- Reduced oil consumption and unexpected breakdowns
- Enhanced component life





Specifications

Engine

Maker/Model	Hyundai HM8.3		
Rated flywheel horse power	SAE J1995 (Gross)	250HP (186KW) at 2,200 rpm	
	J1349 (Net)	245HP (183KW) at 2,200 rpm	
Max Torque	124 kgfm (899 lbfft) at 1,300rpm		
Piston displacement	8,290 cc (506 cu in)		

Hydraulic System

Main pump	
Type	Variable displacement tandem axis piston pumps
Max. flow	2x315 /lmin
Sub-pump for pilot circuit	Gear pump
Cross-sensing & fuel saving pump system.	

Hydraulic motors

Travel	Two speed axial piston motor with brake valve and parking brake
Swing	Axial piston motor with automatic brake

Relief valve settings

Implement Circuits	350 kgf/cm ² (4,980 psi)
Travel	350 kgf/cm ² (4,980 psi)
Powerboost(boom,arm,bucket)	380 kgf/cm ² (5,400 psi)
Swing Circuit	300 kgf/cm ² (4,270 psi)
Pilot Circuit	40 kgf/cm ² (570 psi)
Service valve	Installed

Coolant & Lubricant Capacity

REFILLING	LITER
Fuel tank	580
Engine coolant	27
Engine oil	26.5
Swing device	6.0
Final drive (each)	8.0(7.8)
Hydraulic system / Hydraulic tank	330/190

Drives & Brakes

Drive method	Fully hydrostatic type
Drive motor	Axial piston motor, in-shoe design
Reduction system	Planetary reduction gear
Max.drawbar pull	32,011 kgf (70,572.17 lbf)
Max.travel speed (high/low)	5km/hr (3.1 mph)/3.1km/hr(1.92mph)
Gradeability	35 Degree (70%)
Parking brake	Multi wet disc

Undercarriage

The X-leg type center frame is integrally welded with reinforced box-section track frames. The undercarriage includes 16.5mm track shoes lubricated rollers, idlers, track adjusters with shock absorbing springs and sprockets, and a track chain with triple grouser shoes.

Centre frame	X-leg type
Track frame	Pentagonal box type
No. of shoes on each side	48 EA
No. of carrier rollers on each side	2 EA
No. of track rollers on each side	8 EA
No. of rail guard on each side	3 EA

Swing System

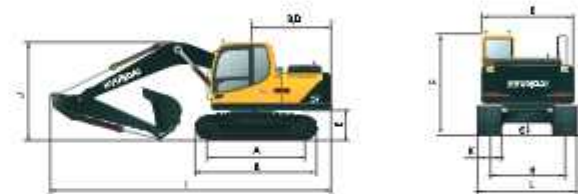
Swing motor	Fixed displacement axial piston motor
Swing reduction	Planetary gear reduction
Swing bearing lubrication	Grease - bathed
Swing brake	Multi wet disc
Swing speed	11.2 rpm

Operating Weight

Shoe Width mm (in)	Operating weight kg (lb)	Ground pressure kgf/cm ² (psi)
600 mm	37200 kg	0.71 (10.1)

Dimensions

(mm)



A	Tumbler distance	4,030 (13' 3")
B	Overall length of crawler	4,940 (16' 2")
C	Ground clearance of counter weight	1,200 (3' 11")
D	Tail swing radius	3,570 (11' 9")
D'	Rear-end length	3,510 (11' 6")
E	Overall width of upper structure	2,980 (9' 9")
F	Overall height of cabin	3,160 (10' 4")
G	Min. ground clearance	500 (1' 8")
H	Track gauge	2,590 (8' 5")
I	Overall length	11,340 (37' 2")
J	Overall height of boom	3,760 (12' 3")
K	Track shoe width	600 (24")
L	Overall width HX360L	3,190 (10' 5")

Working Ranges (mm)

Arm length (std.)	2650 (8' 7")	Boom length (std.)	6450 (21' 2")
-------------------	--------------	--------------------	---------------

A	Maximum Digging Reach	10,710 (35' 1")
A'	Maximum Digging Reach on Ground	10,580 (34' 7")
B	Maximum Digging Depth	6,820 (22' 4")
B'	Maximum Digging Depth (B' level)	6,650 (21' 8")
C	Maximum Vertical Wall Digging Depth	6,320 (20' 7")
D	Maximum Digging Height	10,190 (33' 4")
E	Maximum Dumping Height	7,120 (23' 4")
F	Minimum Swing Radius	4,620 (15' 2")



CONSTRUCTION SOLUTIONS PVT. LTD.
Thapathali, Kathmandu, Nepal | Tel: +977-1-4100543/44/45
Narayan: 9851095936 | Krishna: 9851111096
Rajendra: 9801143168 | Sunil: 9801142975 Fax: +977-1-4100542
Email: sales@cspil.com.np, info@cspil.com.np
Website: www.hyundaice-nepal.com

Service Center:
Khumaltar, Lalitpur
Tel: +977-1-5548970/71
Mob: 9851111094
Spare Parts: 9851111093

PLEASE CONTACT