

HYUNDAI
CONSTRUCTION EQUIPMENT

R85A **SMART**

OPERATING WEIGHT: 8000 kgs

GROSS POWER : 76 HP @ 2200 rpm

BUCKET CAPACITY: 0.32 - 0.70m³



MOVING YOU **FURTHER**

Always wear seat belt & follow the safety instructions.

DESIGNED FOR SMART WORK



Best-in Class Performance

- Advanced CAPO system
- Hydraulic flow summation
- Regeneration system
- Excellent digging forces

Simplified Maintenance

- Easy serviceability
- Extended maintenance
- Large capacity fluid tank
- Low life cycle cost

Increased Machine Durability

- Strengthened undercarriage
- Proven upper structure
- Durable parts
- Reinforced front attachment

Improved Fuel Efficiency

- Electro mechanical control system
- One touch deceleration
- Auto deceleration system
- Efficient breaker mode

Operator Comfort

- Spacious cabin
- Fully adjustable seat
- Enhanced visibility
- User friendly functionality

Parts & Support

- Hyundai genuine parts
- Max parts availability
- On-site product support
- Remote management system (Hi-Track)

Performance

CHOICE OF OPERATING MODE

Working Mode	H Mode	S Mode	L Mode	Breaker Mode
Advantage	<ul style="list-style-type: none"> • Maximum Power • Fast Cycle time 	<ul style="list-style-type: none"> • Balance between power and fuel efficiency 	<ul style="list-style-type: none"> • Better fuel efficiency 	<ul style="list-style-type: none"> • Sets pump flow to optimal level and boosts efficiency

Fuel Efficiency



IMPROVED FUEL EFFICIENCY

- Improved MCU with auto deceleration function
- Advanced hydraulics
- Increased return line diameter by 3/4 "

Reliability



CASTED IDLER

Built to withstand high shock & impact load



DURABLE FRONT STRUCTURE

Use of specialized advance steel plates & reinforced design for higher strength & durability



BALANCED SWING SYSTEM

Swing gear uses a ball bearing to absorb radial and thrust load

Serviceability

EXTENDED MAINTENANCE INTERVAL

Enhanced filtration system extends hydraulic life upto 5000 hrs and Engine oil life upto 500 hrs, which reduces the maintenance cost

CHANGE INTERVAL	Hydraulic oil	Hydraulic filter	Engine oil	Engine Filter
	5000 hrs	1000 hrs	500 hrs	500 hrs

Parts & Support

BENEFITS OF USING GENUINE HYUNDAI PARTS AND LUBRICANTS

- Genuine Hyundai Parts meet strict specifications and standards in Chemistry, Microstructure and Tensile Strength.
- Benefit from the continuous improvements & advancements made by Hyundai's technical team
- Improved performance of hydraulics and engine components
- Enjoy greater productivity with higher uptime
- Higher resale values
- Reduced oil consumption and unexpected breakdowns
- Enhanced component life





Specifications

Engine

Maker/Model		KIRLOSKAR 4R1040NA	
Rated flywheel horse power	SAE	J1995 (Gross)	76 HP (56.7 kW) @ 2200 rpm
		J1349 (Net)	73 HP (54.4 kW) @ 2200 rpm
	6271/1	(Gross)	77 PS (56.7 kW) @ 2200 rpm
		(Net)	74 PS (54.4 kW) @ 2000 rpm
Max Torque		29.5 kgf.m (214 lbf.ft) @ 1320 rpm	

Hydraulic System

Main pump	
Type	Two variable displacement piston pumps
Max. flow	2 x 75.6 lpm
Sub-pump for pilot circuit	Gear pump
Cross-sensing & fuel saving pump system	
Hydraulic motors	
Travel	Two speed axial piston motor with counter balance valve and parking brake
Swing	Axial piston motor with automatic brake
Relief valve settings	
Implement circuits	280 kgf/cm ²
Travel	280 kgf/cm ²
Swing Circuit	210 kgf/cm ²
Pilot Circuit	35 kgf/cm ²
Service valve	Installed

Coolant & Lubricant Capacity

REFILLING	LITRE
Fuel tank	135
Engine coolant	10.8
Engine oil	11.5
Swing device-gear oil	1.5
Final drive (each)	1.2
Hydraulic system / Hydraulic tank	130 / 75

Drives & Brakes

Drive method	Fully hydrostatic type
Drive motor	Axial piston motor in-shoe design
Reduction system	Planetary reduction gear
Max. drawbar pull	5900 kgf (13,000 lbf)
Max. travel speed (high/low)	4.8 kmph (3 mph) / 3.0 kmph (1.9 mph)
Gradeability	35 Degree (70%)
Parking brake	Multi wet disc

Undercarriage

The X-leg type center frame is integrally welded with reinforced box-section track frames. The undercarriage includes lubricated rollers, idlers, track adjusters with shock absorbing spring and sprockets and track chain with triple grouser shoes.

Centre frame	X-leg type
Track frame	Pentagonal box type
No. of shoes on each side	38
No. of carrier rollers each side	1
No. of track rollers each side	5
No. of rail guard each side	1

Swing System

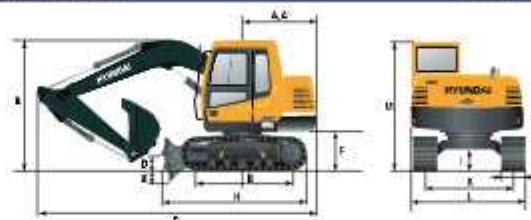
Swing motor	Axial piston motor
Swing reduction	Planetary gear reduction
Swing bearing lubrication	Grease bathed
Swing brake	Multi wet disc
Swing speed	12.0 rpm

Operating Weight

Shoe Width mm (in)	Operating weight kg (lb)	Ground pressure kgf/cm ² (psi)
450 mm (18")	8,000 (17,637)	0.26 (3.70)

Dimensions

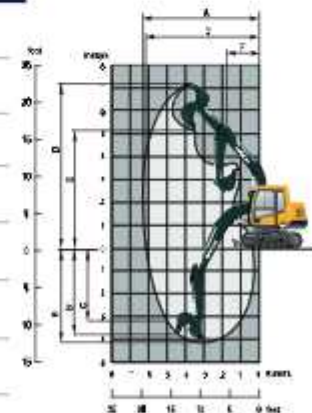
mm



A	Tail swing radius	1750
A'	Rear-end length	1727
B	Overall height of boom	2750
C	Overall length	6080
D	Ground clearance of blade up	400
E	Depth of blade down	280
F	Ground clearance of counterweight	760
G	Tumbler distance	2130
H	Length of lower blade with dozer blade	3340
I	Min. ground clearance	360
J	Track shoe width	450
K	Track gauge	1750
L	Overall width of upperstructure	2260
M	Overall height of cabin	2640

Working Ranges

	Boom length (std.)	3,700
	Arm length (std.)	1,670
A	Maximum Digging Reach	6,330
A'	Digging Reach on Ground	6,190
B	Max Digging Depth	4,150
B'	Max. Digging Depth (8' level)	3,810
C	Vertical Digging Depth	3,200
D	Maximum Digging Height	7,260
E	Maximum Dumping Height	5,170
F	Minimum Swing Radius	1,750



CONSTRUCTION SOLUTIONS PVT. LTD.
Thapathali, Kathmandu, Nepal | Tel: +977-1-4100543/44/45
Narayan: 9851095936 | Krishna: 9851111096
Rajendra: 9801143168 | Sunil: 9801142975 Fax: +977-1-4100542
Email: sales@cspl.com.np, info@cspl.com.np
Website: www.hyundaloc-nepal.com

Service Center:
Khumaltar, Lalitpur
Tel: +977-1-5548970/71
Mob: 9851111094
Spare Parts: 9851111093

PLEASE CONTACT